



# Social Simulator Engine

---

**SSE**

Revolutionary Computational Platform for Predicting Complex Social Dynamics

Integrating Cognitive Modeling · Strategic Reasoning · Environmental Simulation

# Traditional Models Fall Short

Fragmented Understanding Fails Real-World Complexity



## Static Behavioral Models

Lack strategic depth and adaptive reasoning



## Economic Simulators

Model only resources, ignore psychology



## Agent-Based Models

Ignore sociological factors entirely



## Forced Choice

Researchers pick: psychology, sociology, or strategy

**Result:** No single discipline can capture real-world complexity

# The SSE Architecture

Four Integrated Modules Working Synergistically



**SSM**

Situation Semantics Mapper

Parse reality into strategic landscapes



**ESS**

Environmental Substrate

Model real-world constraints



**MCM**

Population & Identity

Capture cultural dynamics



**SQC & SRL**

Brain + Strategy

Simulate cognition & decisions

Unified Platform · Multi-Disciplinary Integration · Strategic Foresight

# SSM: Situation Semantics Mapper

Parsing Reality into Strategic Landscapes



## Parse Input Data

Extract structured information from real-world sources



## Construct Situation Graphs

Map complex relationships into comprehensive networks



## Infer Actor Strategies

Analyze intentions and predict strategic behaviors

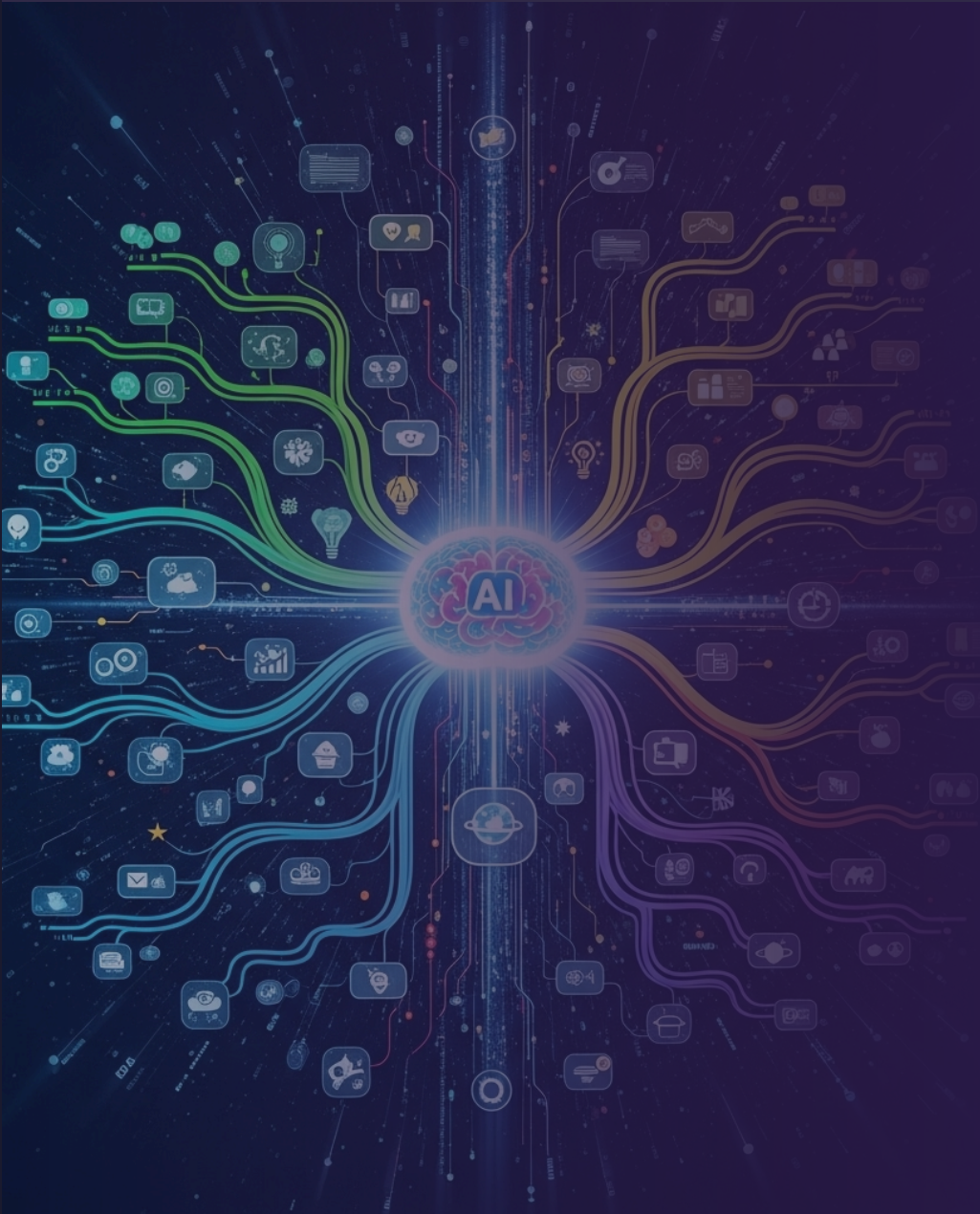


## Compile Game Structures

Build formal models for strategic analysis

Transforms raw data into actionable strategic context

# ESS: Environmental Substrate



Modeling Real-World Constraints



## **Institutional Constraints**

Regulatory and organizational boundaries



## **Resource Conditions**

Material and financial limitations



## **STL: Physical Topology**

Geographic and spatial infrastructure



## **DSTL: Digital Topology**

Network and digital infrastructure

Grounds simulations in realistic operational environments

# MCM: Population & Identity Modeling

Capturing Cultural Dynamics



## Psychological Priors

Individual cognitive biases and preferences



## Sociological Segmentation

Population group classifications



## Cultural Signals & Values

Normative frameworks and belief systems



## Value Structures

Hierarchical priorities and motivations



## Institutional Enforcement

Social compliance mechanisms

Models the human and cultural fabric of social systems

# SQC & SRL: Brain + Strategy



## Simulating Cognition & Strategic Decision-Making



### Meaning Attribution

Interpret situations



### Value Activation

Trigger motivations



### Emotional Dynamics

Affective influences



### Recursive Reasoning

Multi-level thinking



### Signaling & Deception

Strategic communication



### Coalition Formation

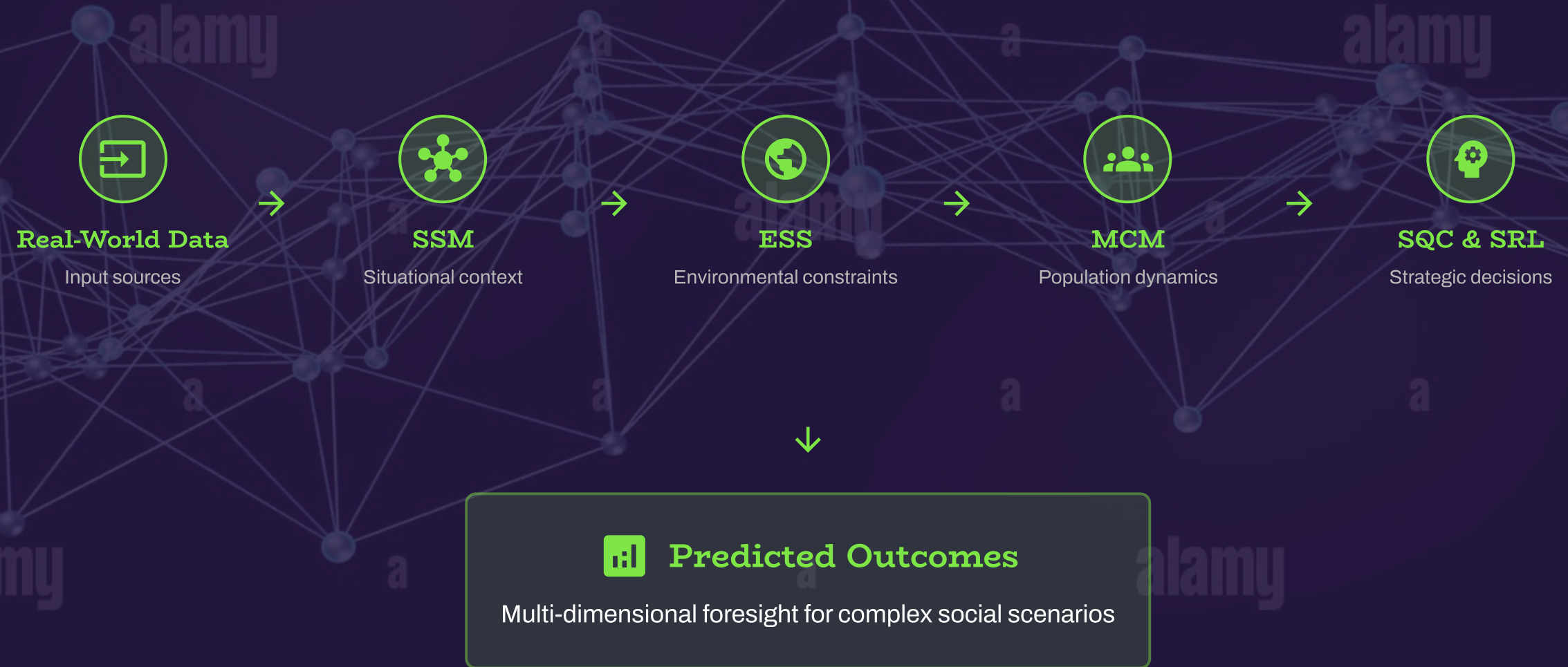
Alliance building



### Institutional Anticipation • Predicting institutional responses

# How Modules Work Together

Synergistic Integration for Complete Social Simulation



*Each module enriches the simulation with unique perspectives, creating comprehensive understanding*

# SSE vs Traditional Models

## Traditional Models

- ✗ **Single-Discipline Focus**  
Limited perspective
- ✗ **Static Behavior Rules**  
Fixed assumptions
- ✗ **Resource-Centric**  
Ignores human factors
- ✗ **Limited Prediction**  
Surface-level insights

Fragmented Understanding

## SSE: The New Standard

- ✓ **Multi-Disciplinary Integration**  
Psychology + Sociology + Strategy
- ✓ **Dynamic Strategic Reasoning**  
Adaptive decision-making
- ✓ **Cognition + Culture + Environment**  
Holistic modeling
- ✓ **Deep Strategic Foresight**  
Multi-level prediction

Comprehensive Understanding

# Real-World Impact & Future Roadmap

## Applications

### **Strategic Negotiations**

Multi-party bargaining simulation

### **Historical Analysis**

Understand outcome drivers

### **Scenario Planning**

Test strategic alternatives

### **Policy Simulation**

Anticipate social responses

### **Conflict Resolution**

Identify intervention points

## Future Roadmap

### **Enhanced ML Integration**

Advanced neural architectures

### **Real-time Simulation**

Live scenario updates

### **Expanded Domains**

Geopolitics, economics, healthcare

### **API Platform Development**

Democratize access to SSE